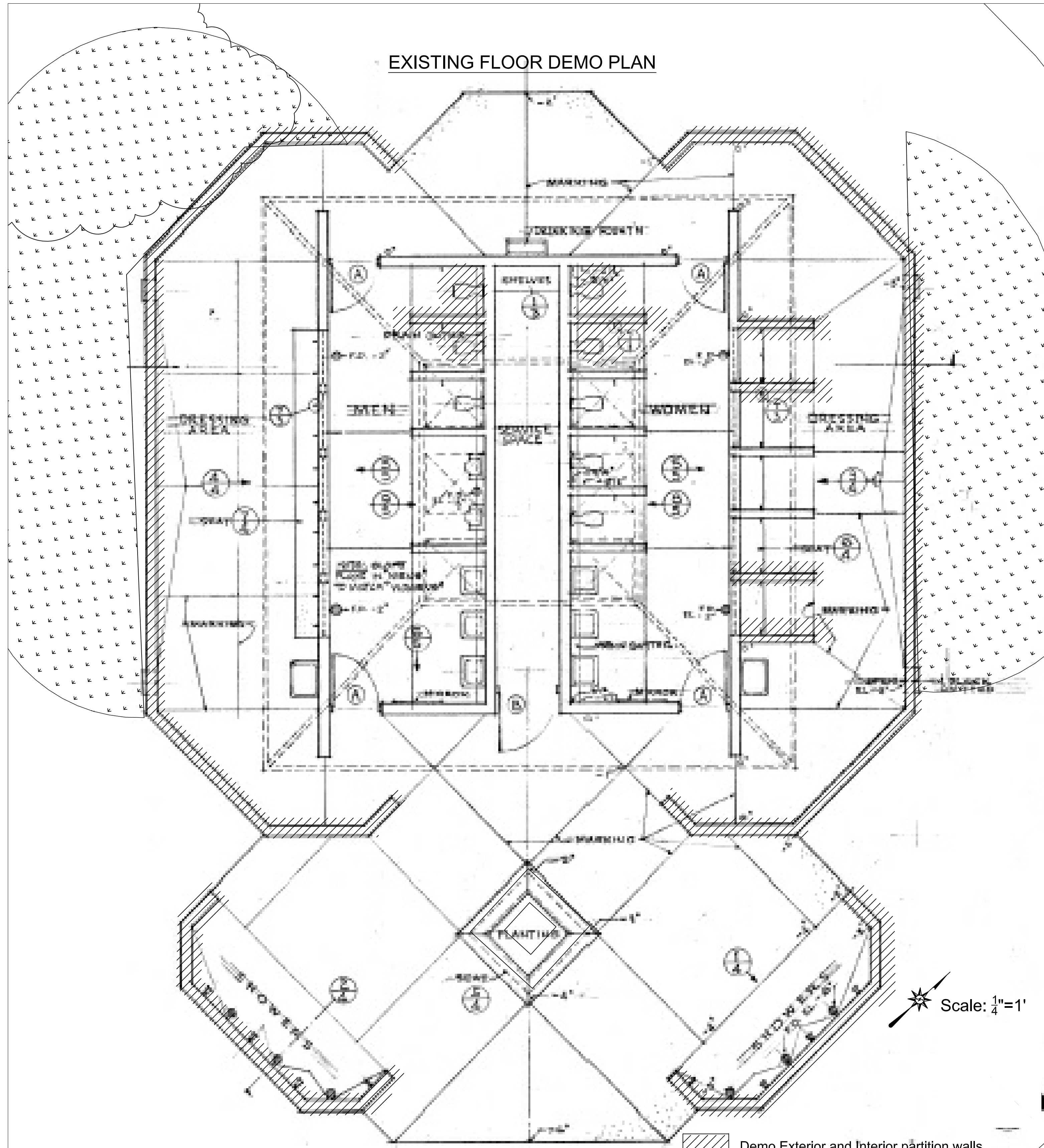


EXISTING FLOOR DEMO PLAN

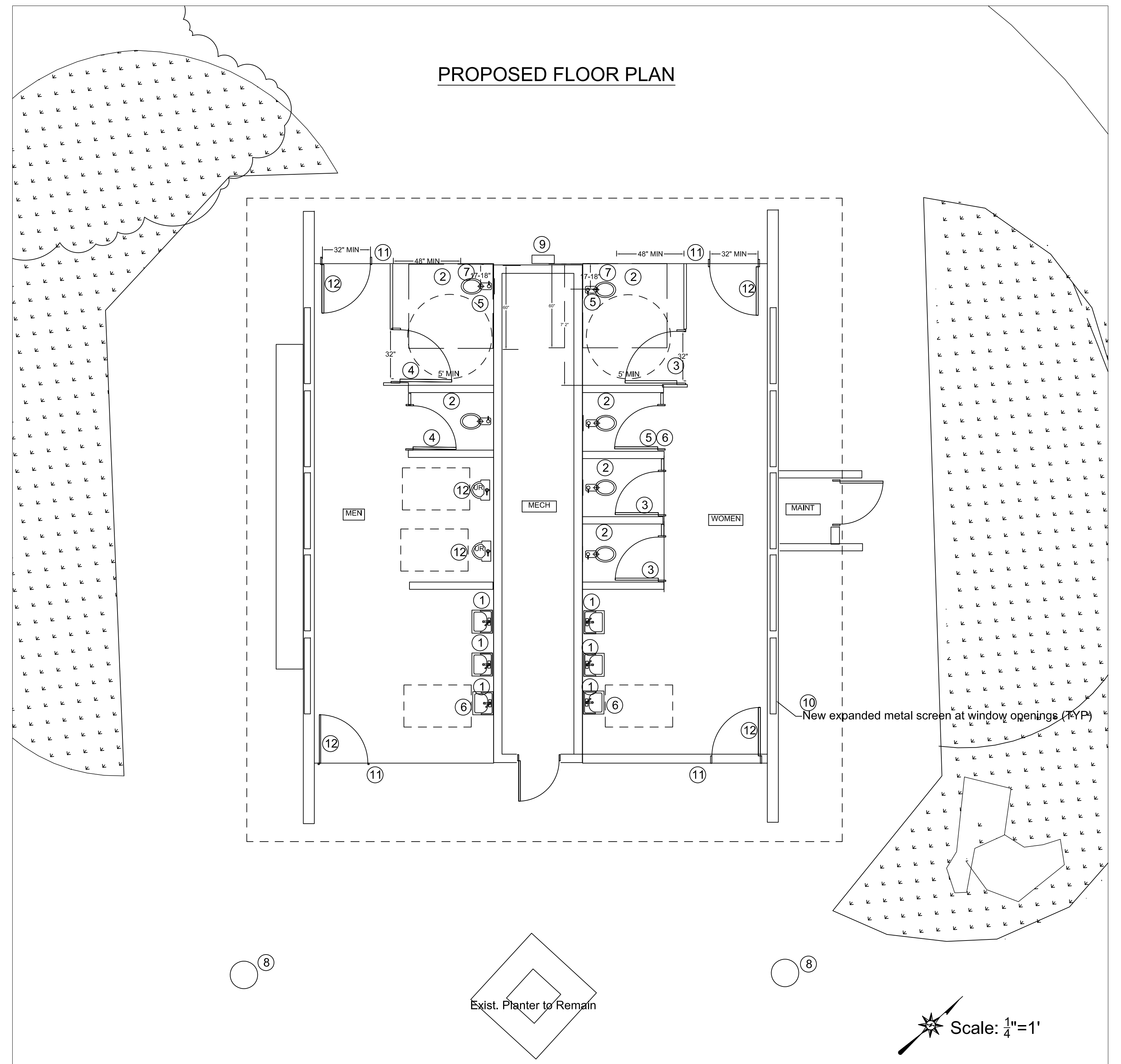


- DEMO NOTES:**
- A. Remove and dispose of plumbing fixtures, protect water supply and drain line in place
 - B. Remove and dispose partitions, and dispensers
 - C. Remove and dispose of light fixtures, see electric plan for all locations and replacement type.
 - D. Remove and dispose recessed soap dispenser
 - E. Electric panel to remain
 - F. Mech. Room Door to remain, protect in place.
 - G. Remove, and replace window screens.
 - H. Demolish exterior shower walls and dressing area walls to 6" below grade and refinish voids to match adjacent concrete.
 - I. Saw cut, break and remove concrete to expose plumbing to be replaced. See Plumbing Plan.
 - J. Remove block wall

Demo Exterior and Interior partition walls
Note 10.

Scale: 1/4"=1'

PROPOSED FLOOR PLAN



Scale: 1/4"=1'

KEYED NOTES:

1. New 'Gojo' soap dispenser
2. Bobrick surface mounted single jumbo roll toilet paper dispenser-model B-2890
3. Partition door - full height (Women's).
4. Partition Door - 3/4 height (Men's).
5. Accessible water closet ; 17" lip, w/ 48" clear space in front see Detail Sheet for ADA stall dimensions, floor mounted.
6. Accessible lavatory w/ 30"x48" clear space shown. See Detail Sheet for mounting height
7. Stainless steel grab bars Detail Sheet for ADA dimensions
8. New commercial ADA stainless steel vandal resistant shower column with foot rinse head
9. New commercial wall mounted stainless steel water fountain and bottle filling station.
10. (N) Wood frame and stainless steel (304) expanded metal screen.
11. (N) ADA signage per CBC 703.4.1, 703.4.2
12. (N) Entrance gate paint Vista 8551 'Pochahontas'

GENERAL NOTES:

- A. Partitions to be stainless steel with a "random swirl " pattern TYP.
- B. All partitions stainless steel hardware is to be 'Vandal Resistant'
- C. Attach partition stiles to floor and wall per MFR specifications / instructions TYP.
- D. Attach partition panels to block wall per MFR specifications / instructions TYP.
- E. Epoxy Flooring w/ 6" cove up wall (1" Radius)to be laid flush w/ exterior concrete
- F. Accessible water closet ; 17" lip, w/ 48" clear space in front see Detail Sheet for ADA stall dimensions, floor mounted.
- G. Paint door, jamb, window jamb (typ) Vista 8551 'Pochahontas'
- H. Paint Interior/Exterior walls Vista Swiss Coffee 23

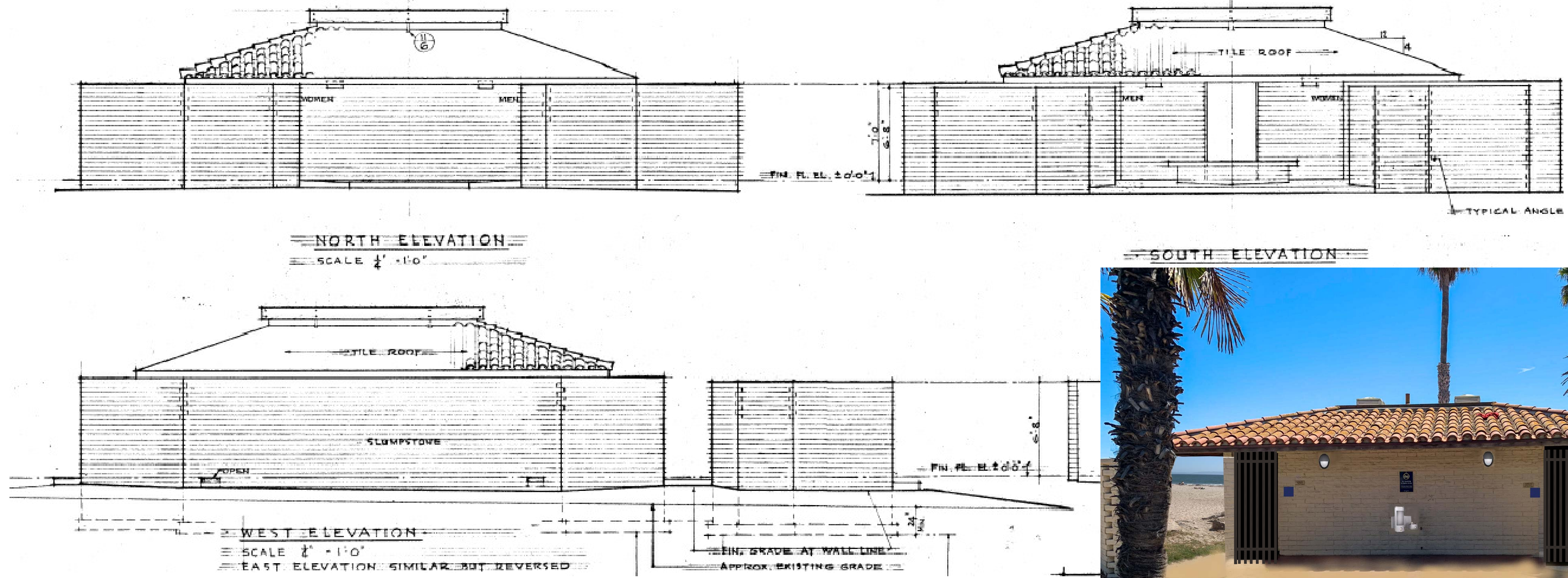
DRAFTER	LB
DESIGNER	LB
CHECKER	BA
PROJ. MNGR.	LB
DRAWING DATE	2/15/2023

LEADBETTER RESTROOM ADA RENOVATION PROJECT
801 Shoreline Drive Santa Barbara CA 93109
LAYOUT PLAN

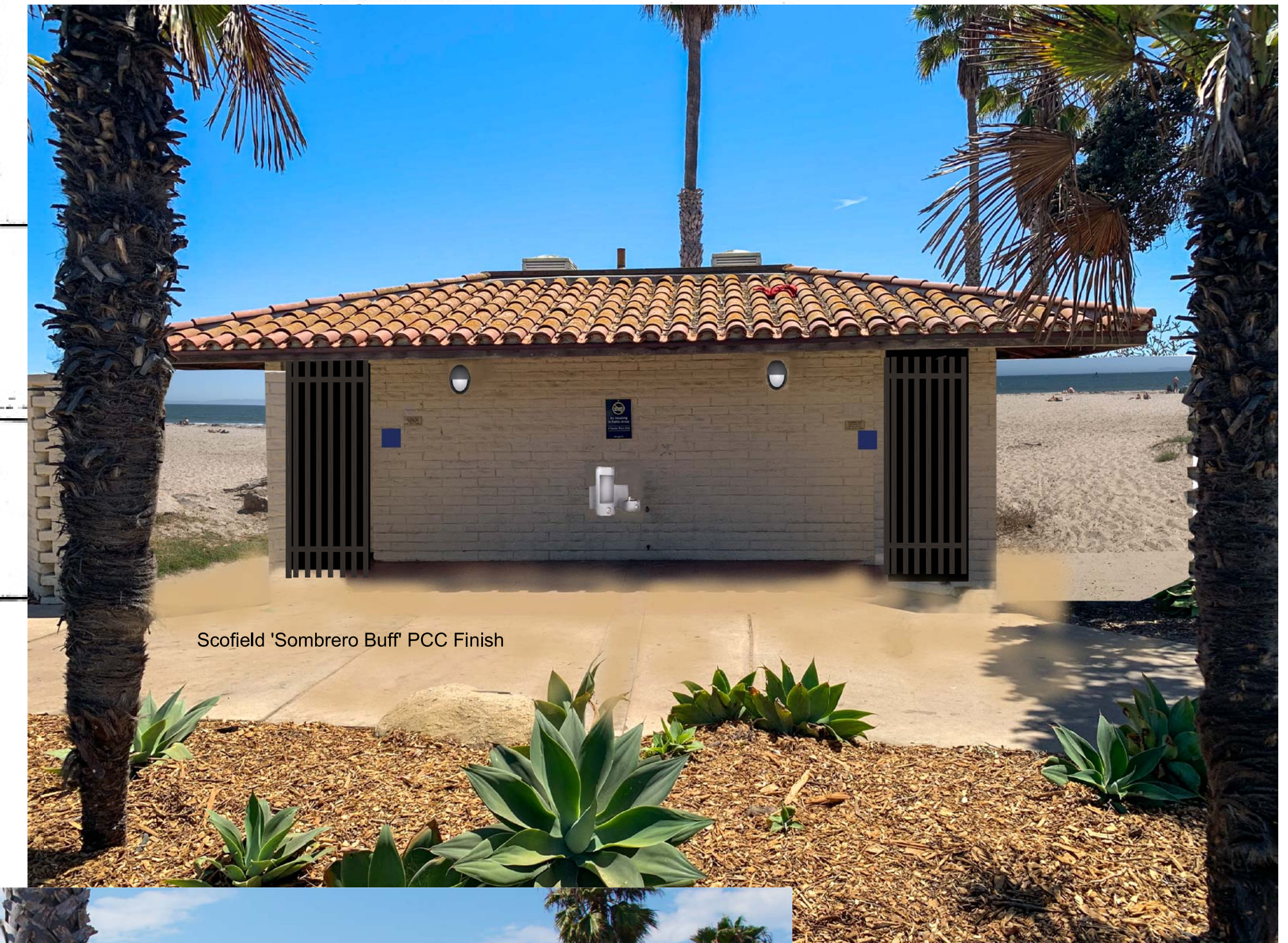
CITY OF SANTA BARBARA
WATERFRONT DEPARTMENT- FACILITIES DIVISION

WATERFRONT DIRECTOR

SCALE:	NOTED	PROJ.NO.	---
FACTOR:		SHT.	2 OF 9 SHTS.
VERT.	NOTED	DWG.NO.	3030-002
HOR.	NOTED		



Existing Elevations



Scofield 'Sombrero Buff' PCC Finish



Existing Red PCC

Existing South Elevation



Proposed South Elevation

Proposed Column Shower

Proposed North Elevation



M013ED

Kenall LED Exterior Fixture (TYP)

Window Mesh

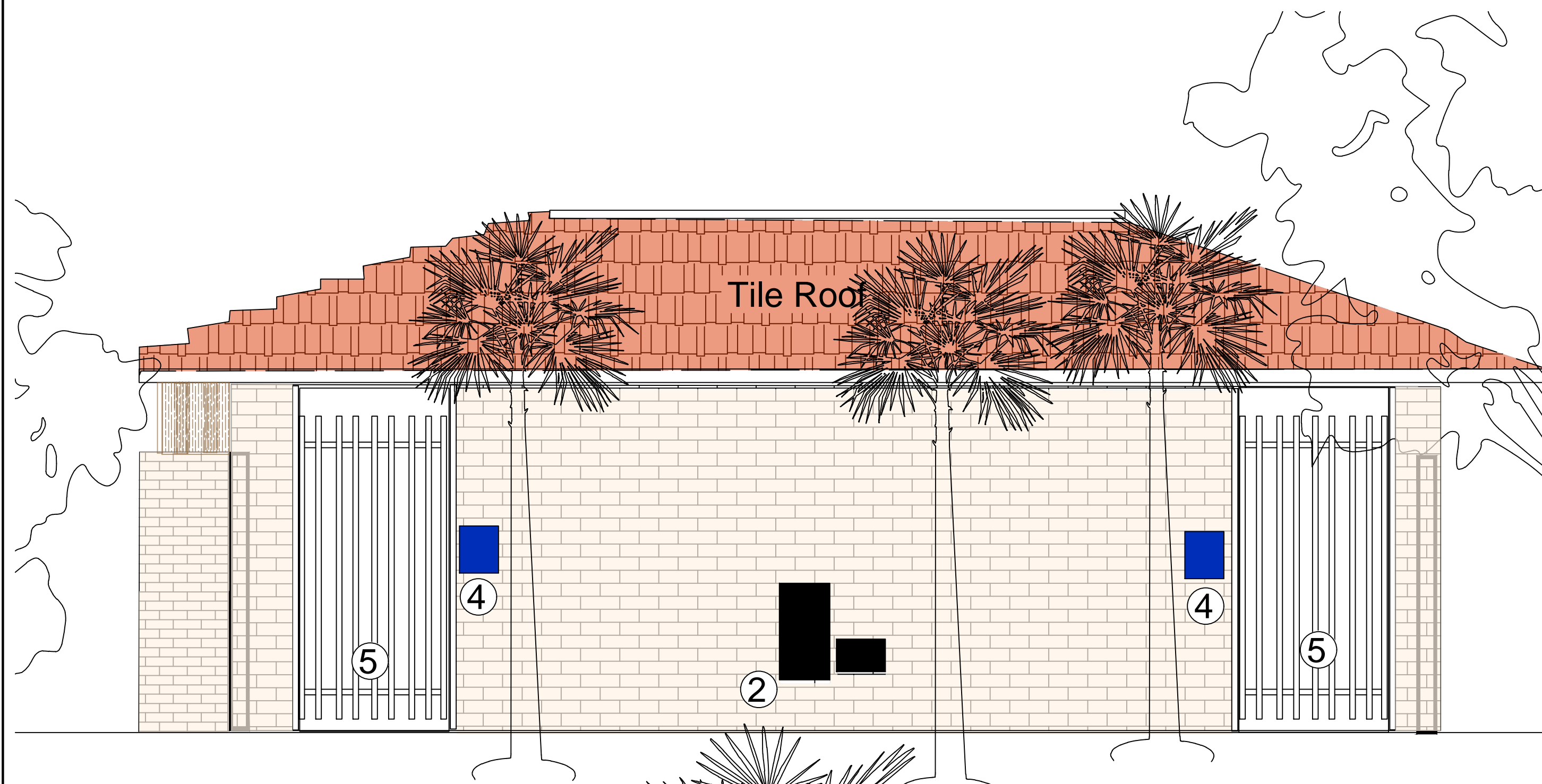
Stainless Steel Drinking Fountain and Water Bottle Filling Station

DRAFTER	LB
DESIGNER	LB
CHECKER	BA
PROJ. MNGR.	LB
DRAWING DATE	2/15/2023
REVISIONS	

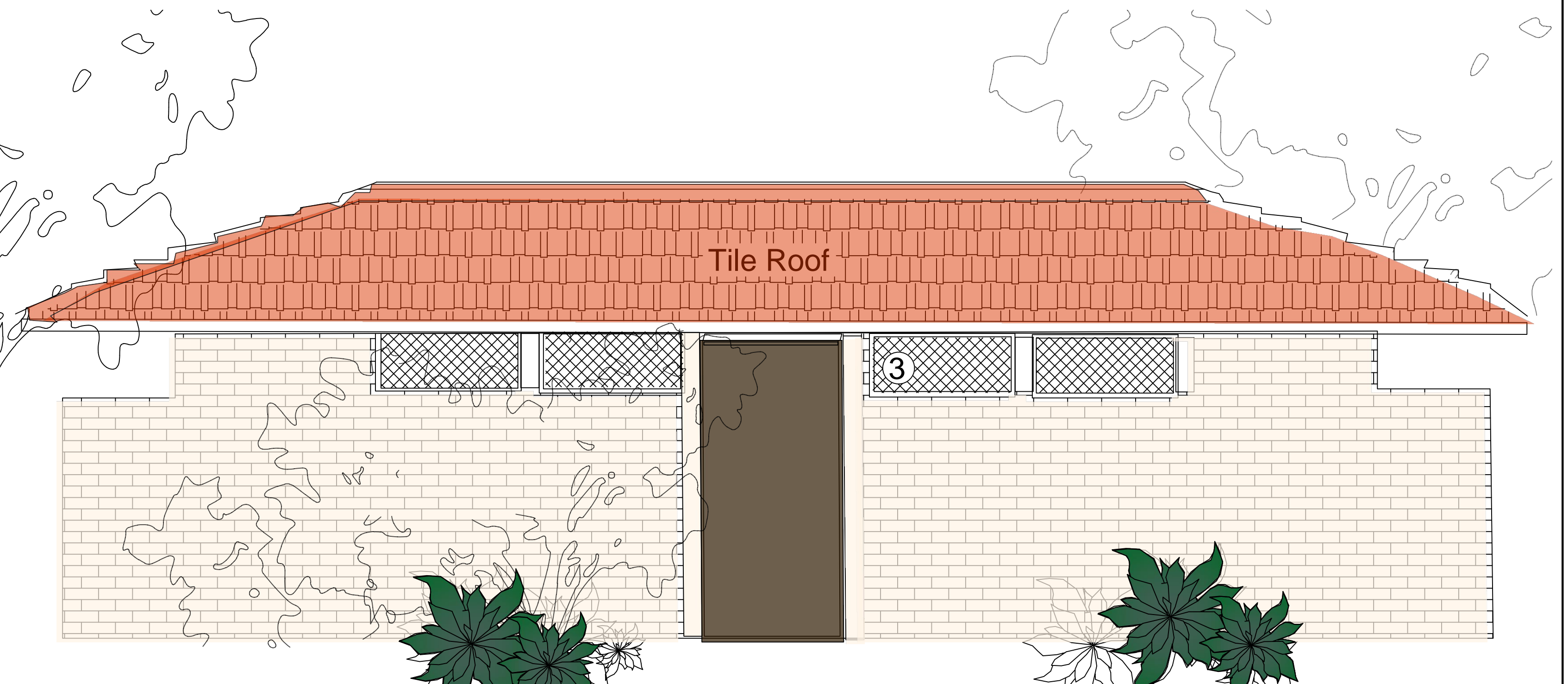
LEADBETTER RESTROOM ADA RENOVATION PROJECT
 801 Shoreline Drive Santa Barbara CA 93109
 EXISTING ELEVATION and PROPOSED RENDERING

CITY OF SANTA BARBARA
 WATERFRONT DEPARTMENT- FACILITIES DIVISION
 WATERFRONT DIRECTOR

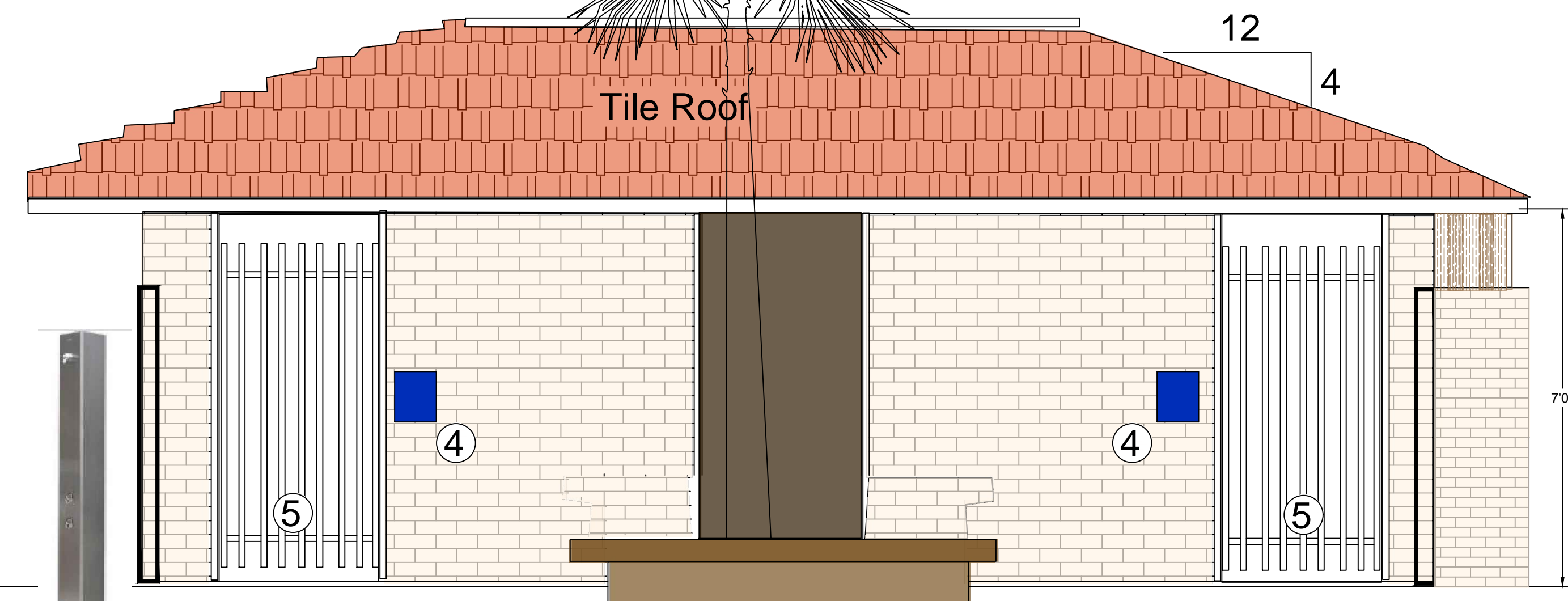
SCALE:	NOTED	PROJ.NO.	---
FACTOR:		SHT.	3 OF 9 SHTS.
VERT.	NOTED	DWG.NO.	3030-002
HOR.	NOTED		



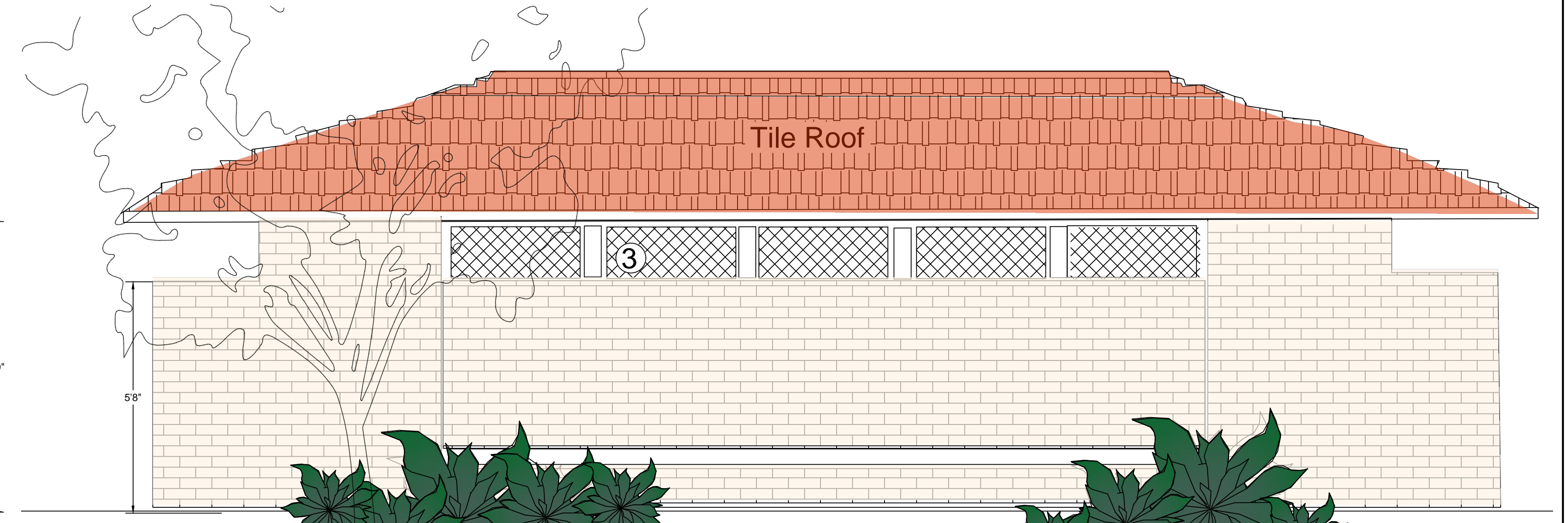
North Elevation



East Elevation



South Elevation



West Elevation

NOTES:

- A. Repair window sill(s).
- B. Replace Ornamental metal window treatment in (N) Wood Window Frame
- C. (E) Meleluca and Fantail Palm Trees to remain, protect in place.
- D. Remove Exterior Partition wall(s).
- E. Paint walls with exterior grade, Vista Paint ACRIBOND 3000 Swiss Coffee 23.
- F. Paint Entry Gates, Doors, Jamb, Window Trim, and Fascia Vista Paint 8551 Pochahontas.
- G. Replace (E) knob, Install (N) door handle and deadbolt, w/ (N) Schlage Falcon B series I.C. lever handle. Must comply with CBC 118-309.
- H. (N)ADA restroom signage
- I. Replace Exterior LED light fixtures with Dark-sky compliant, Low profile, Bronze finish. Min. 8,000 lumens, Max. Kelvin 4,000.
- J. Halsey Taylor HTHB-OVLER-I OVL-II Drinking Fountain with integral HydroBoost (non-refridgerated)
- K. All masonry tie-rods and extra grout from partition walls shall be removed. Holes to be re-grouted. Extraneous surface grout to be hand chiseled or ground to match surrounding block wall.
- L. Existing Red concrete flatwork to be etched and re-sealed with Scofield Revive Exterior Stain 'Sombrero Buff' .


KEYED NOTES:

- 1. New commercial ADA stainless steel vandal resistant shower column with foot rinse head
- 2. New commercial wall mounted stainless steel water fountain and bottle filling station.
- 3. (N) Wood frame and stainless steel (304) expanded metal screen.
- 4. (N) ADA signage per CBC 703.4.1, 703.4.2
- 5. (N) Entrance gate paint Vista 8551 'Pochahontas'

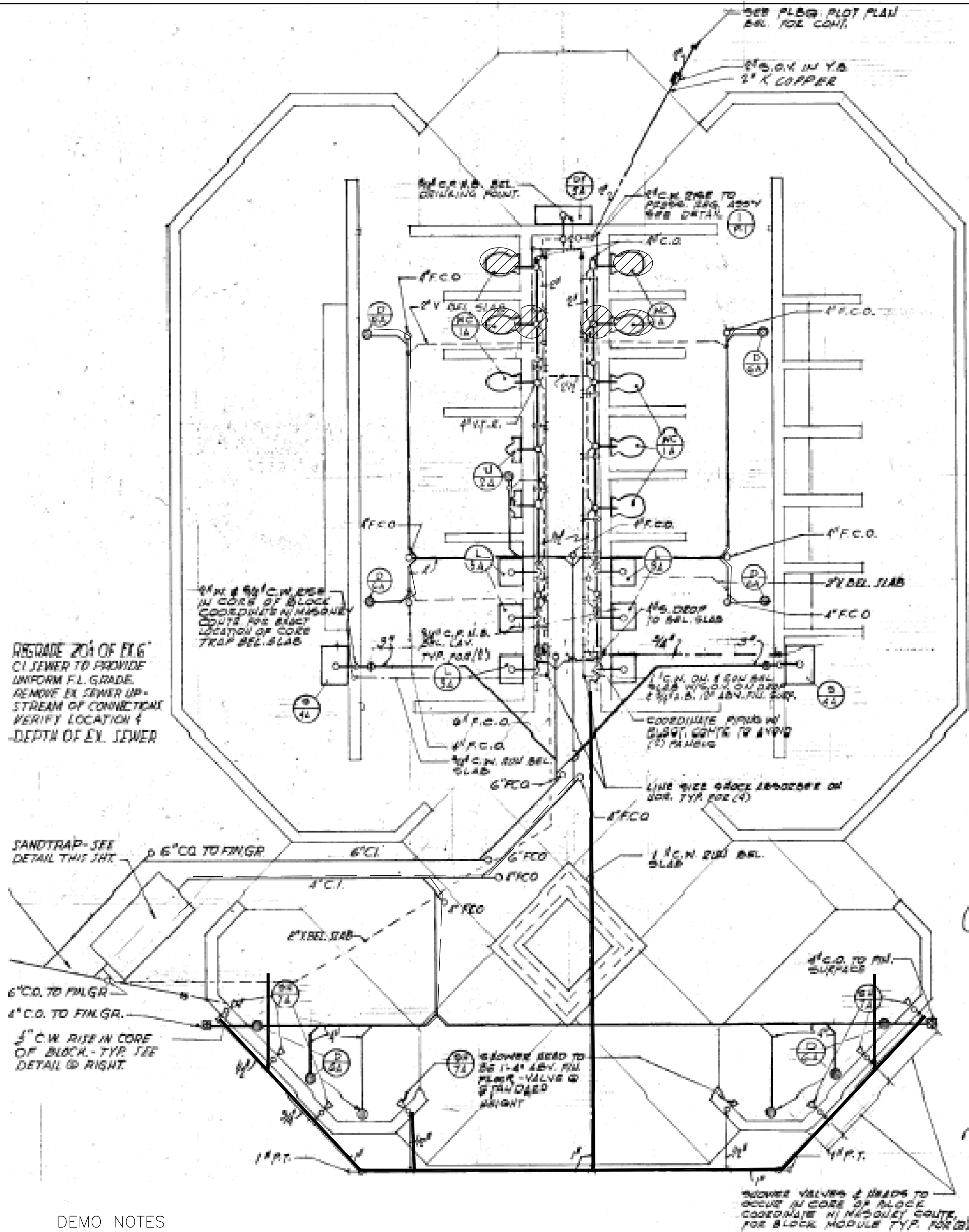
DESCRIPTION	DATE	APPROVED

DRAFTER	LB
DESIGNER	LB
CHECKER	BA
PROJ. MNGR.	LB
DRAWING DATE	2/15/2023

LEADBETTER RESTROOM ADA RENOVATION PROJECT
 801 Shoreline Drive Santa Barbara CA93109
PROPOSED ELEVATIONS

CITY OF SANTA BARBARA
 WATERFRONT DEPARTMENT- FACILITIES DIVISION

 WATERFRONT DIRECTOR

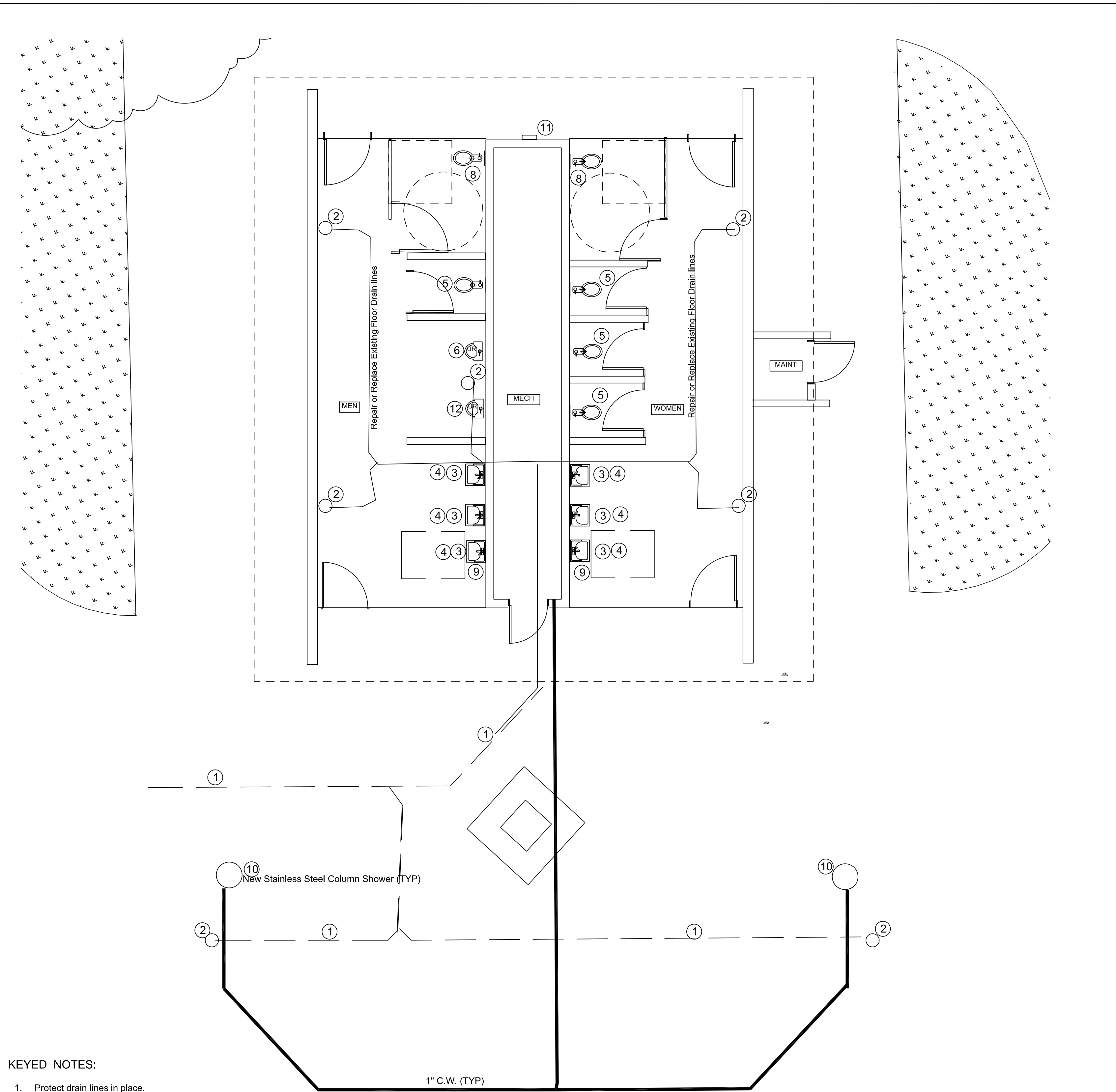
SCALE: 1/2"=1'	PROJ.NO. _____
FACTOR: _____	SHT. <u>4</u> OF <u>9</u> SHTS.
VERT. <u>NA</u>	DWG.NO. <u>3030-002</u>
HOR. <u>NA</u>	



RESURFACE 20' OF EX. 6\"/>

SANDTRAP- SEE DETAIL THIS SHT.
 6\"/>

DEMO NOTES
 DEMO TOILET FIXTURES, VENT and SEWER



KEYED NOTES:

1. Protect drain lines in place.
2. Floor drain to have new grid strainer installed.
3. Lavatory to be hung with a 29" knee clearance.
4. All lavatories to have Chicago faucets installed, model# 802-V665ABCP, and shall be metering and self closing.
5. Water closet, open front seat, and flush valve (typ.); 15" lip.
6. Non-Waterless Urinal (typ.); 17" lip-per ADA-w/ 30x48 clear space shown.
7. Lavatory- Porcelain or cast iron Ceco Model 551 (typ.).
8. Accessible water closet; 17" lip, w/ 48" cir. space in front see Detail Sheet for ADA stall dimensions, floor-mounted.
9. Accessible lavatory w/ 30"x48" clear space shown. See Detail Sheet for mounting height.
10. New commercial ADA stainless steel vandal resistant shower column with foot rinse head.
11. New commercial wall mounted stainless steel water fountain and bottle filling station.
12. Non-Waterless Urinal (typ.) 24" lip.

GENERAL PLUMBING NOTES:

- A. All drain lines are to be protected during course of the project.
- B. All drain lines must be snaked and flushed prior to receive a full sign off by Waterfront staff.
- C. All new toilets are to have open front seats- keep protected until final.
- D. All flush valve risers shall be plumbed.
- E. All plumbing must be secure.
- F. Plumbing chase to have all saw cutting dust/debris and concrete removed post construction.
- G. All dead end piping and unused vent through roof shall be terminated.
- H. All exposed drain pipes must be covered per CBC 1115B.2.1.2.2.

FIXTURE SCHEDULE			
QTY	Description	Manufacturer	Model
2	Stainless ADA Outdoor Shower	Willoughby	WODS-ADA-1A-316-Y
1	Outdoor Wall Mounted Bottle Filler w/ Drinking Fountain	Willoughby	CWBF-2WM-RPB-316-2-BL
6	Wall Hung Lavatory	Ceco	551
6	Self Metering Faucet	Chicago Faucets	802-V665ABCP
6	Surface Mounted Single Jumbo-Roll Toilet Tissue Dispenser	Bobrick	B-2890
4	Surface Mounted Sanitary Napkin Disposal	Bobrick	B-270
6	Uppercut dual-flushometer	Sloan	WES-111
6	Water closet	American Standard	Afwal 1.28 flowise 3451.128
6	Water closet	American Standard	Afwal 1.28 flowise 3451.128
2	Washdown Urinal	Sloan	SU-7009
2	Sloan Manual Flushometer	Sloan	Sloan 186

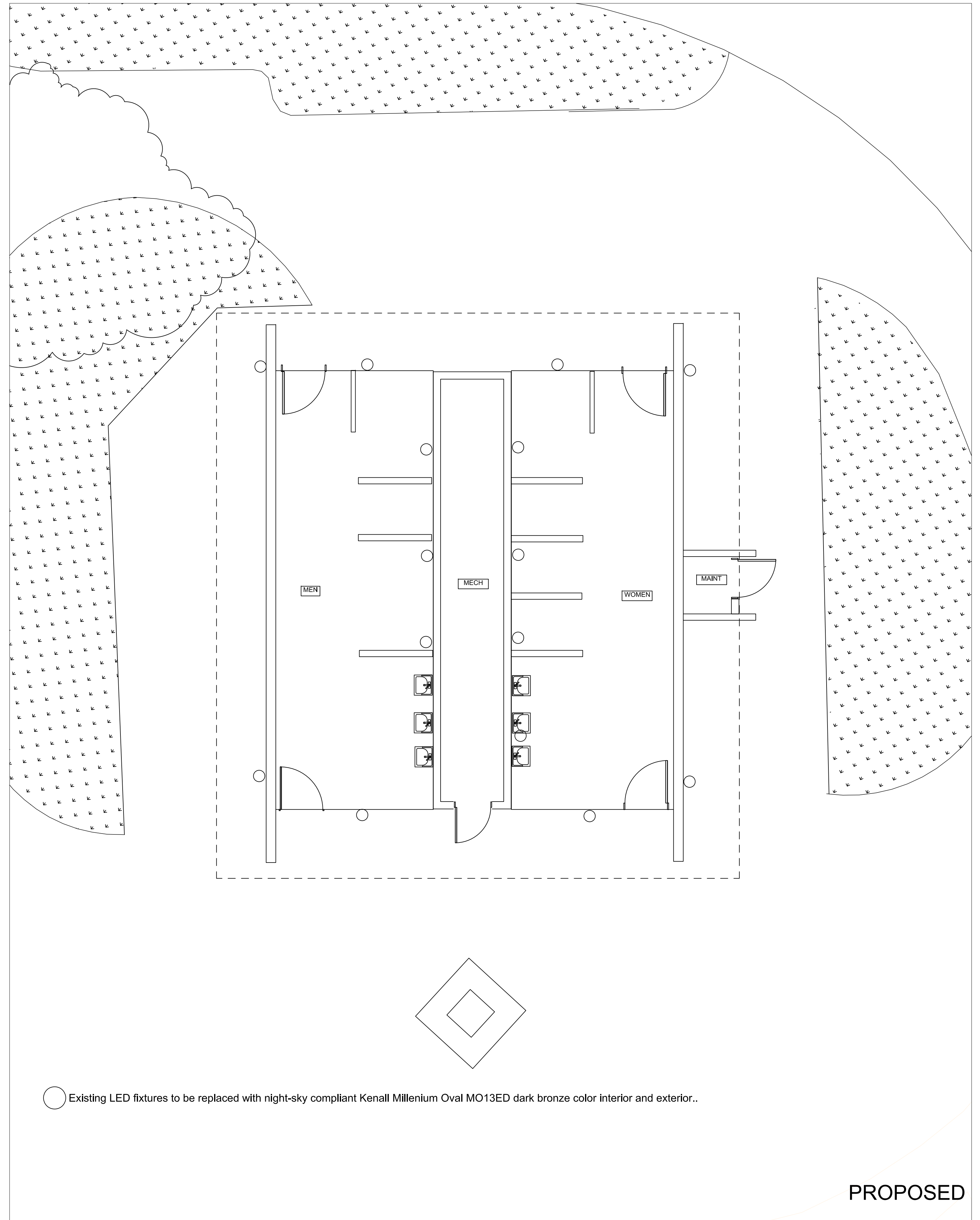
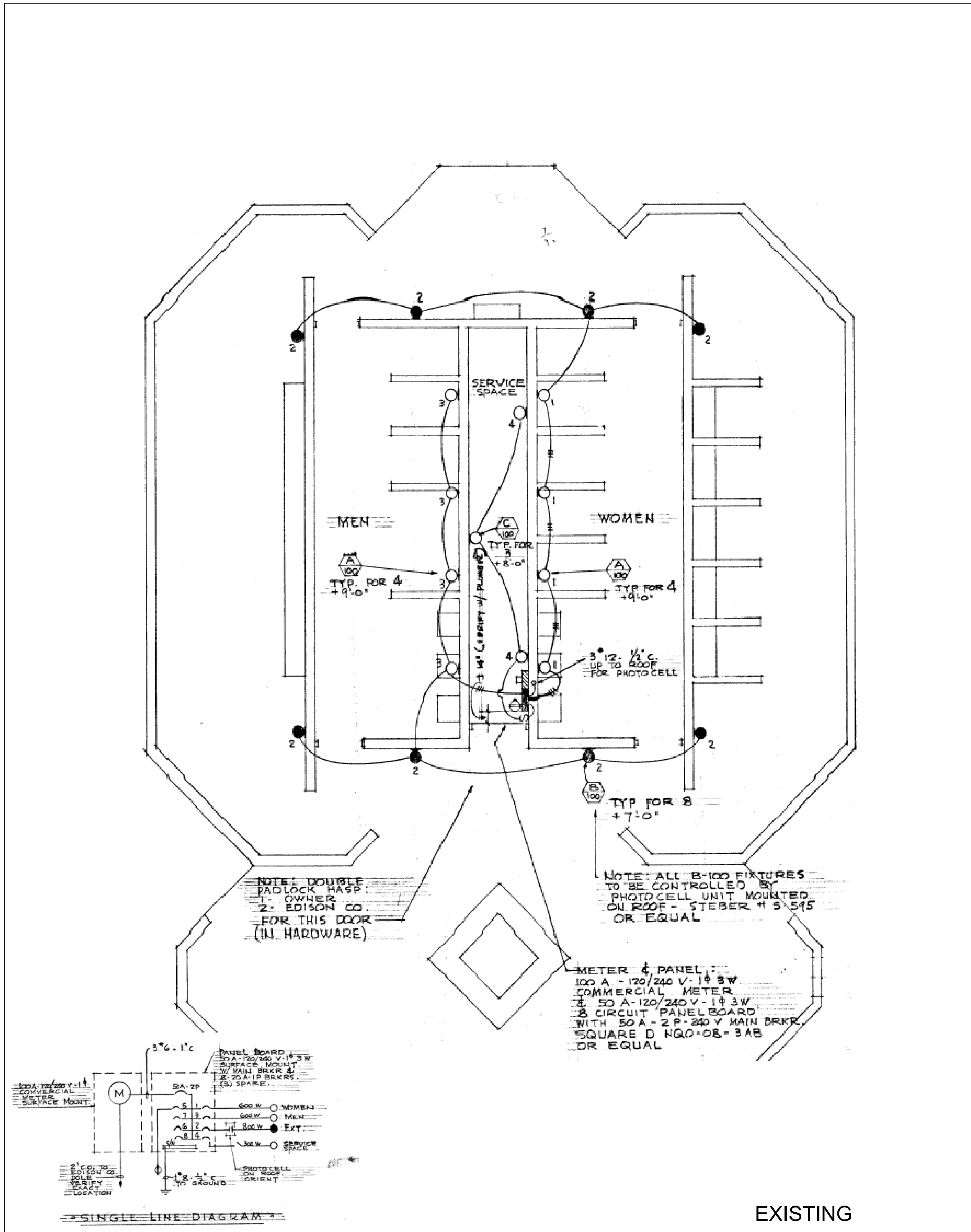
DRAFTER	LB
DESIGNER	LB
CHECKER	BA
PROJ. MNGR.	LB
DRAWING DATE	2/15/2023

LEADBETTER RESTROOM ADA RENOVATION PROJECT
 801 Shoreline Drive Santa Barbara CA93109
 PLUMBING PLAN

CITY OF SANTA BARBARA
 WATERFRONT DEPARTMENT- FACILITIES DIVISION

 WATERFRONT DIRECTOR

SCALE:	1/4"=1'	PROJ.NO.	---
FACTOR:		SHT.	_5_ OF _9_ SHTS.
VERT.	NA	DWG.NO.	3030-002
HOR.	NA		



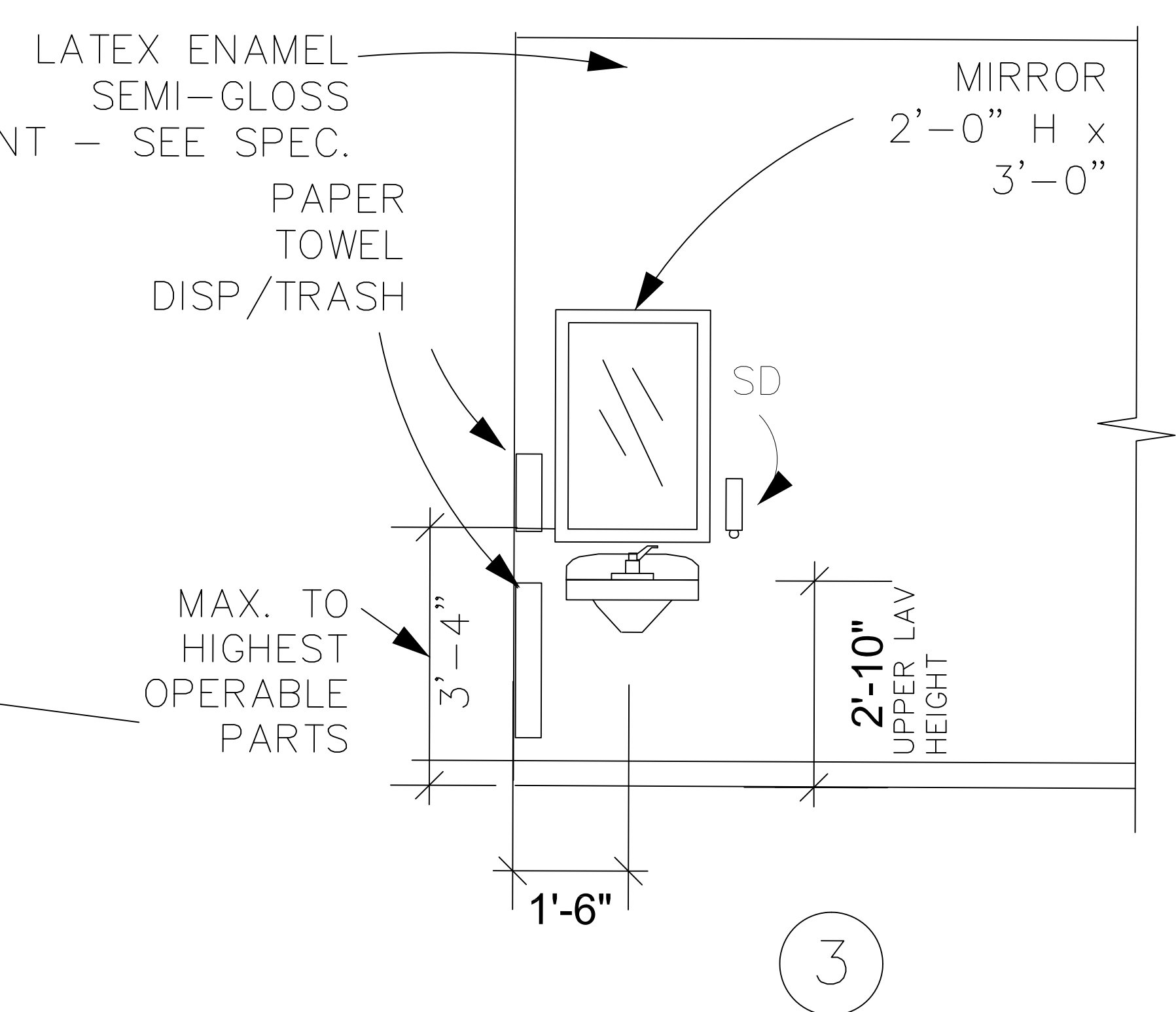
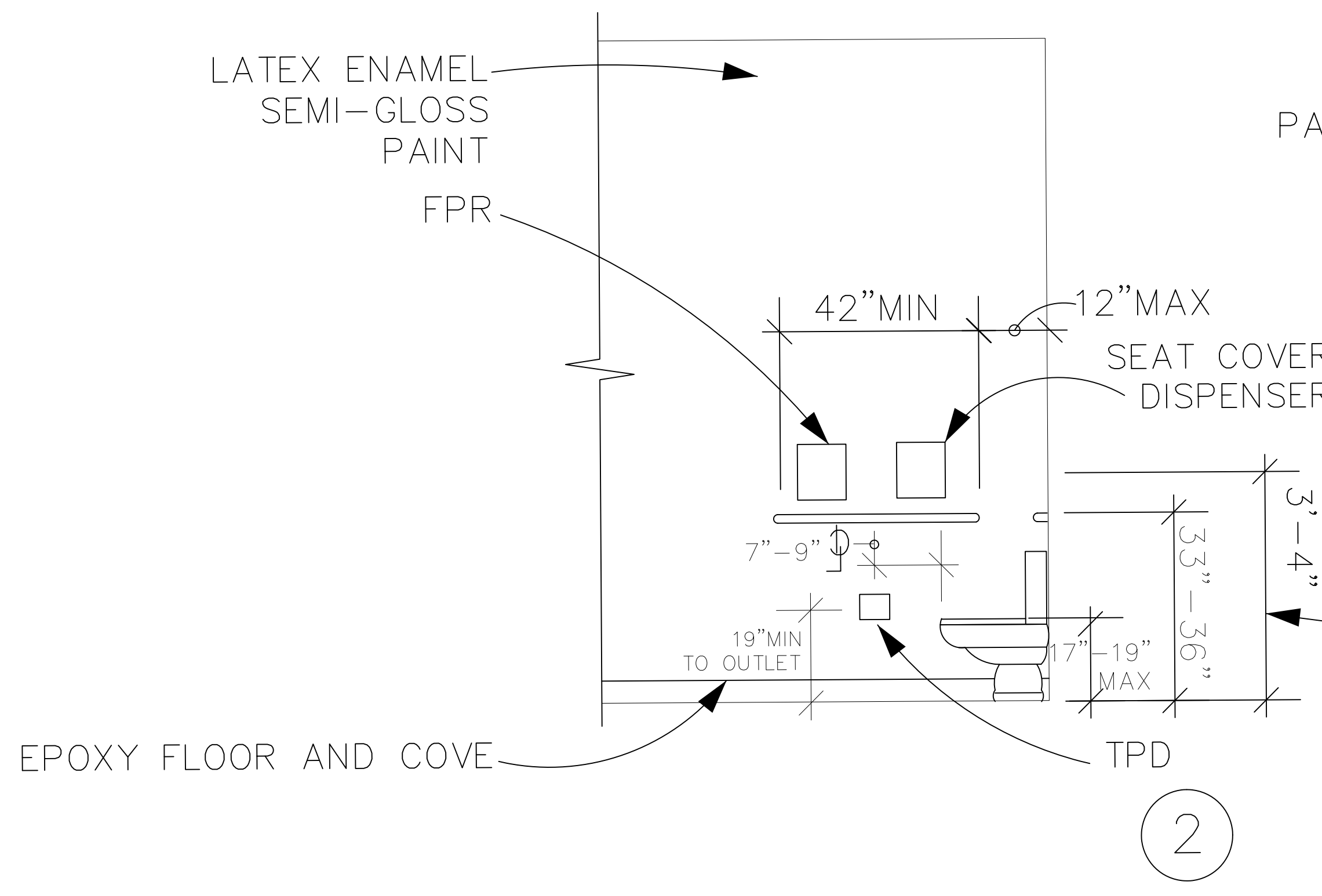
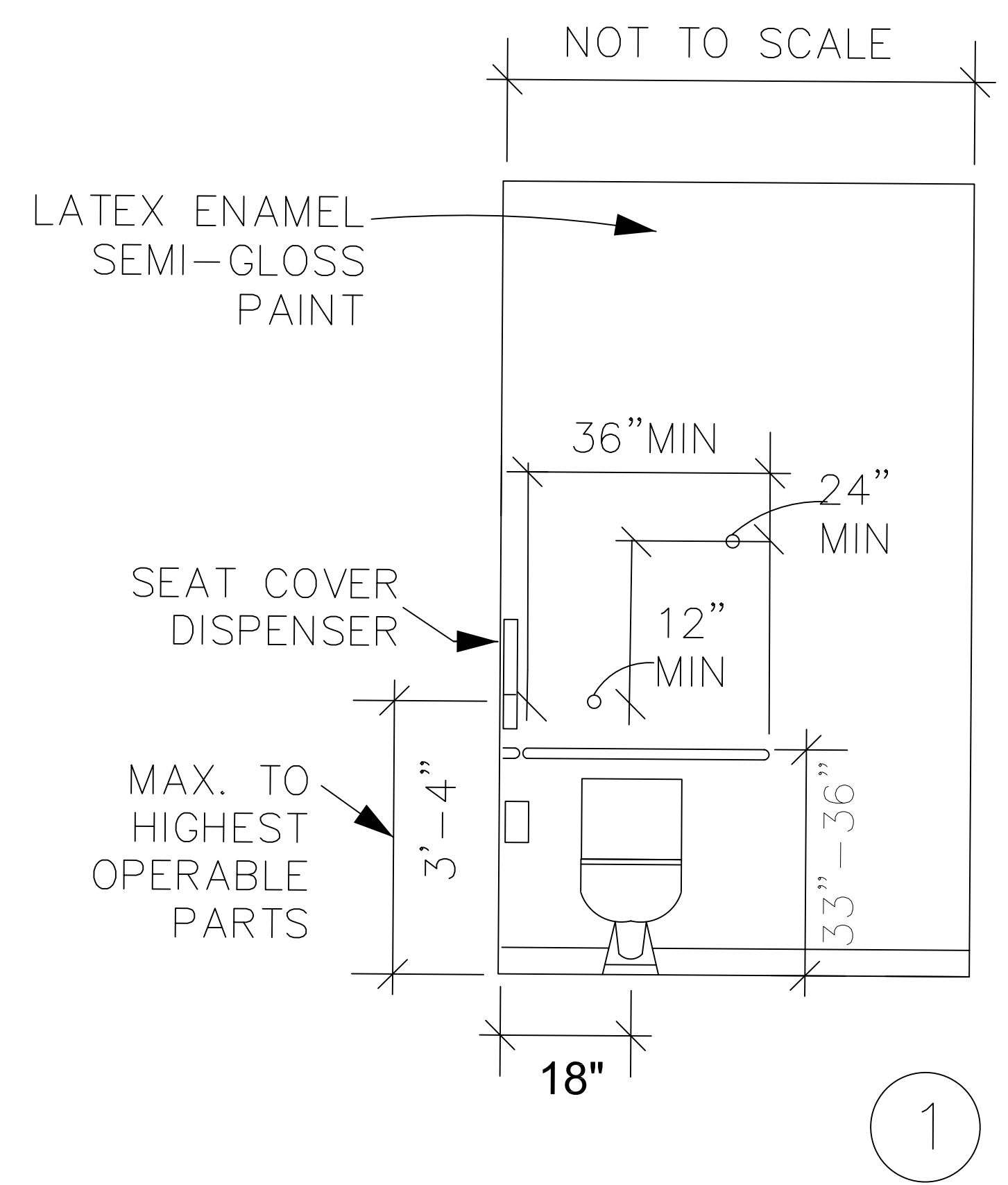
LEADBETTER RESTROOM ADA RENOVATION PROJECT
 801 Shoreline Drive Santa Barbara CA93109
ELECTRICAL PLAN

CITY OF SANTA BARBARA
 WATERFRONT DEPARTMENT- FACILITIES DIVISION
 WATERFRONT DIRECTOR

SCALE: 1/4"=1'
 FACTOR: NOTED
 VERT. NOTED
 HOR. NOTED
 PROJ. NO. _____
 SHT. 6 OF 9 SHTS.
 DWG. NO. 3030-002

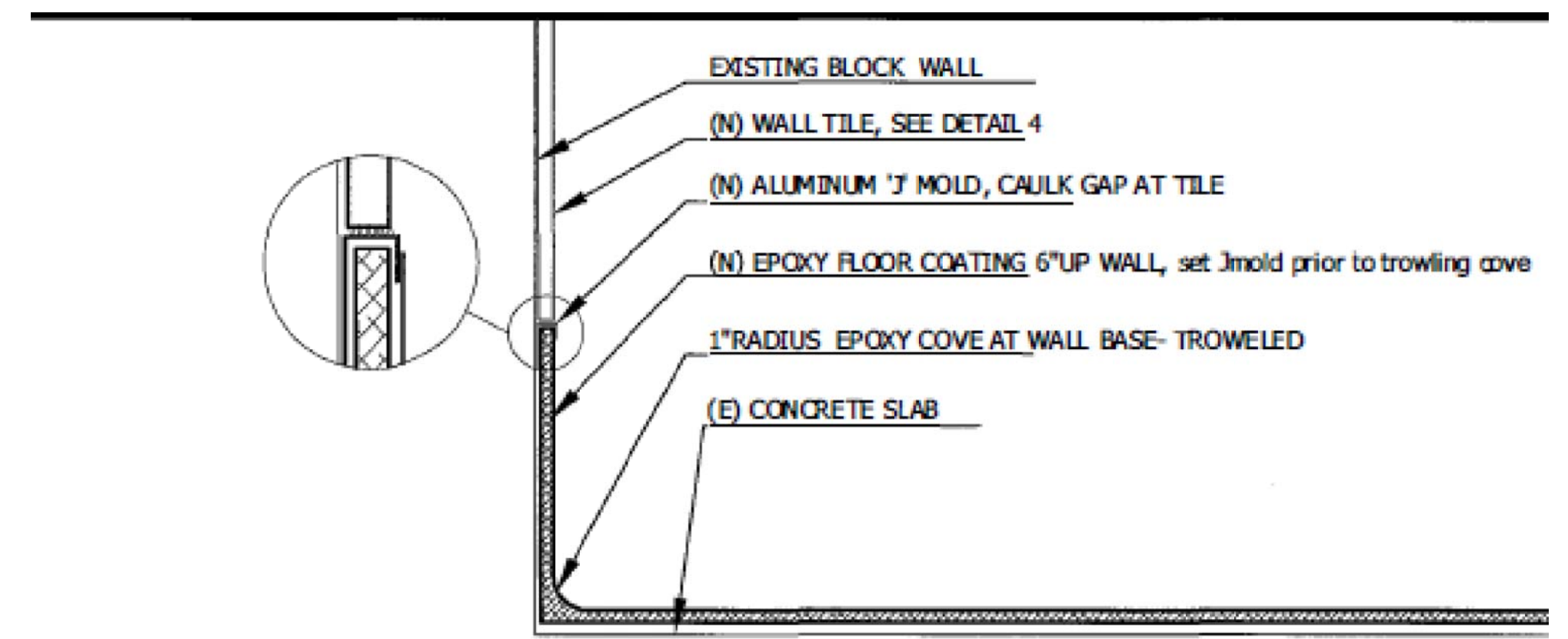
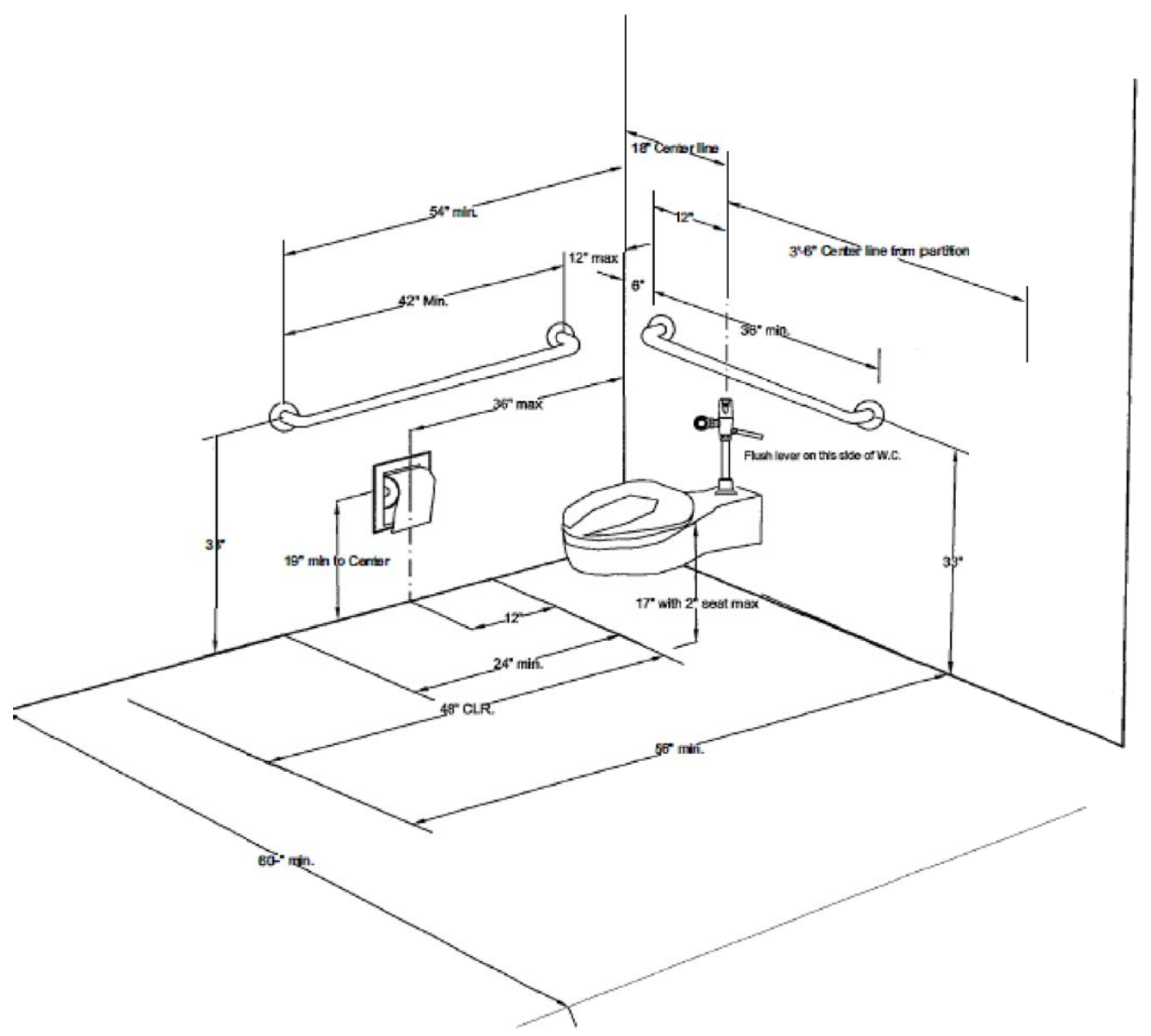
DRAFTER	LB
DESIGNER	LB
CHECKER	BA
PROJ. MNGR.	LB
DRAWING DATE	2/15/2023

DESCRIPTION	DATE	APPROVED

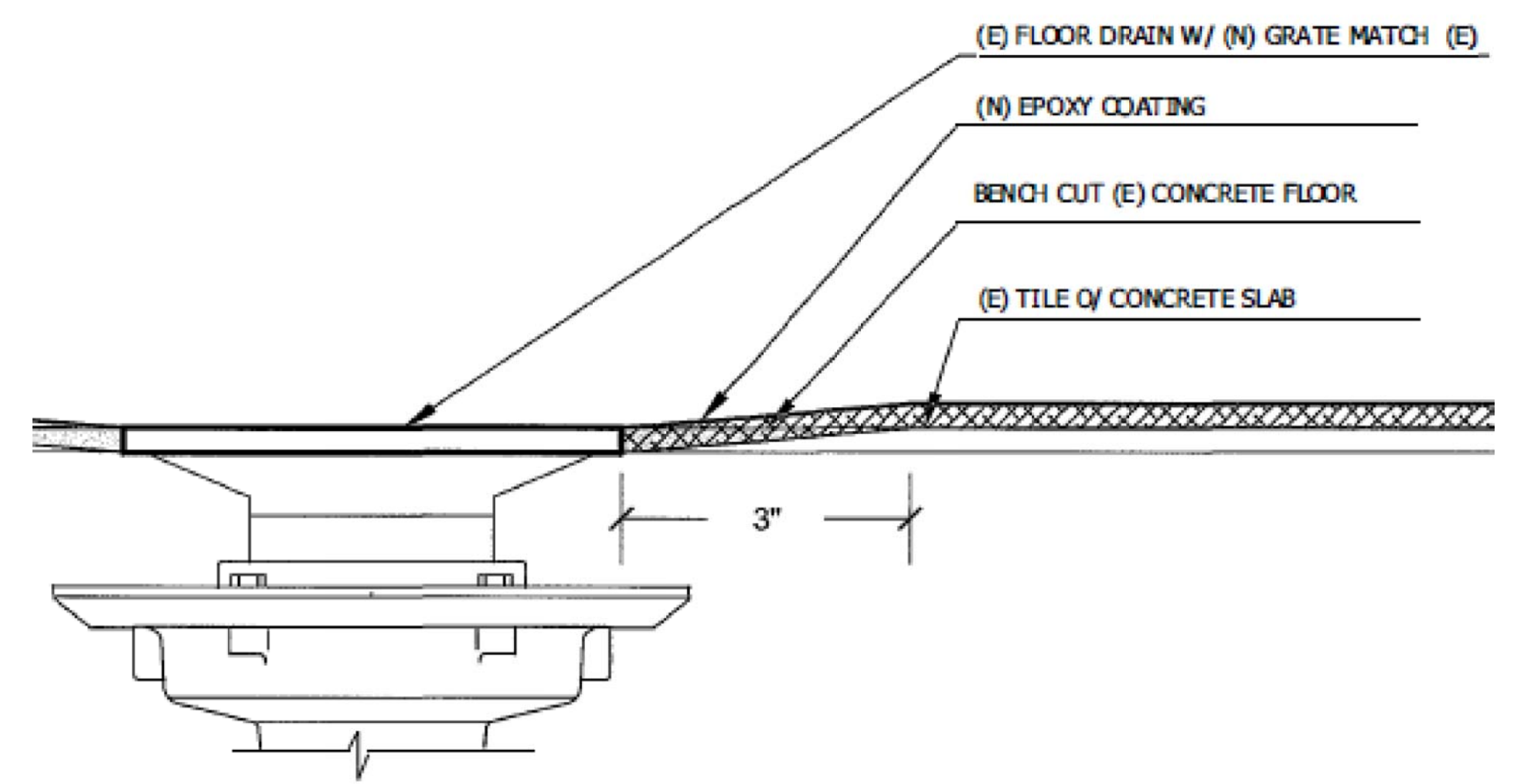


ADA BATHROOM ELEVATION

Scale: 1/4" = 1'-0"



FLOOR EPOXY- 6" COVE



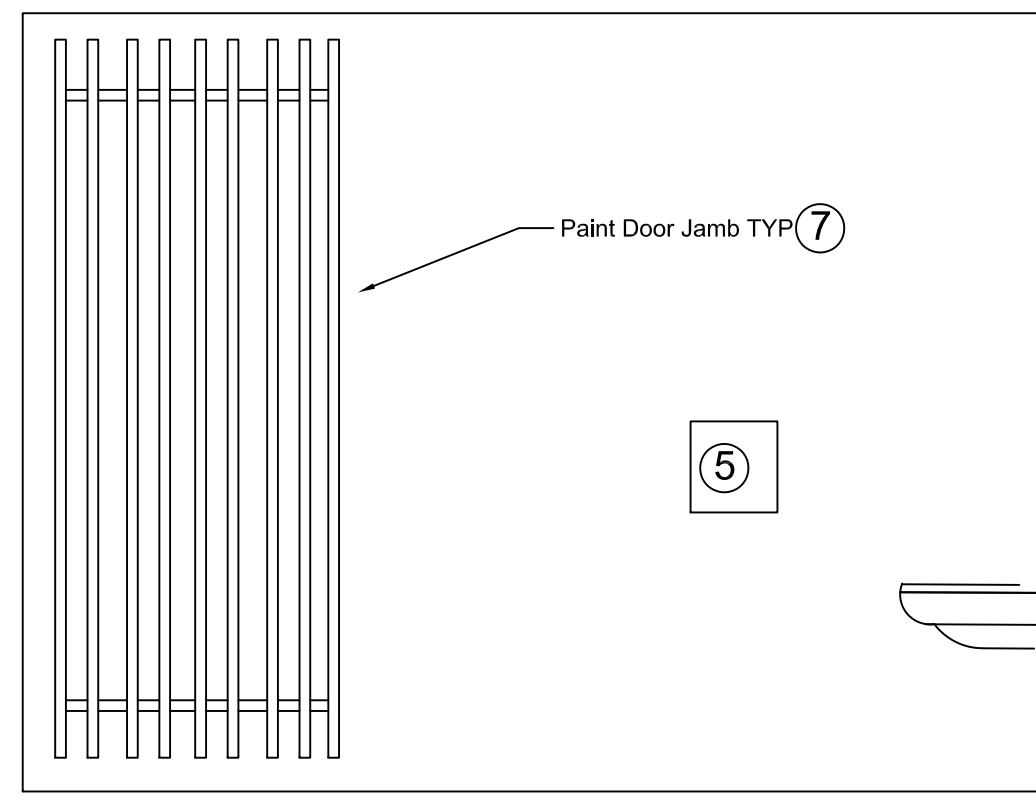
FLOOR EPOXY to FLOOR DRAIN

DRAFTER	LB	
DESIGNER	LB	
CHECKER	BA	
PROJ. MNGR.	LB	
DRAWING DATE	2/15/2023	
DESCRIPTION	DATE	APPROVED
REVISIONS		

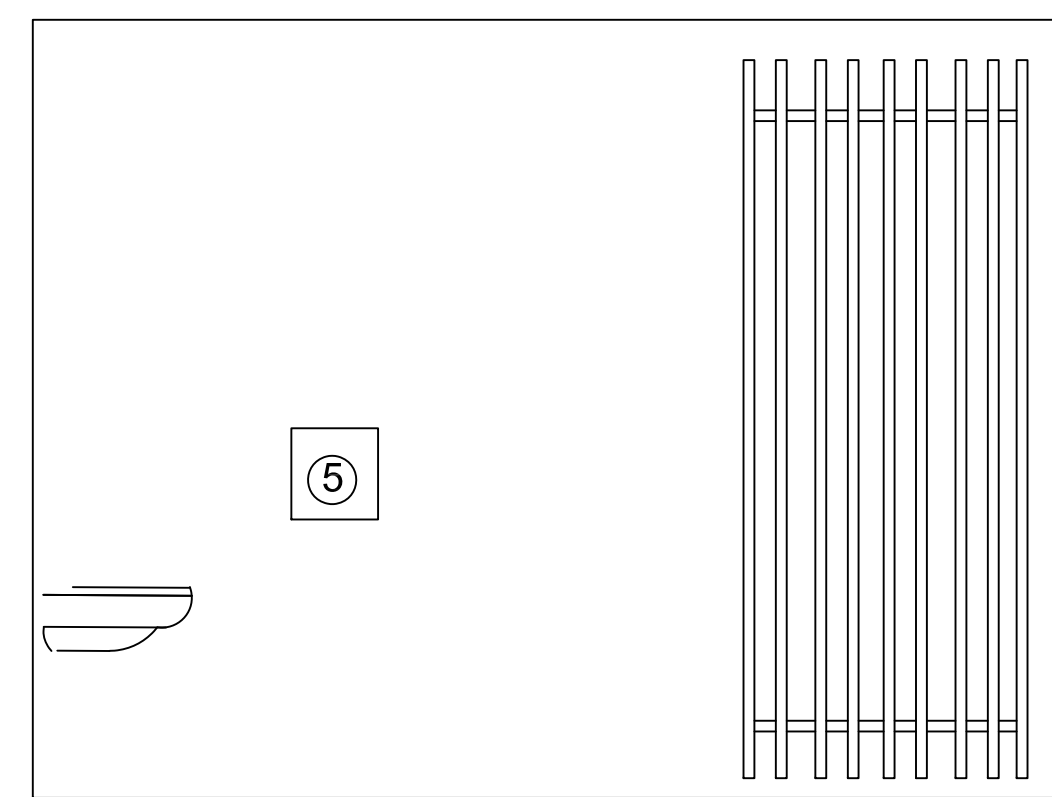
LEADBETTER RESTROOM ADA RENOVATION PROJECT
 801 Shoreline Drive Santa Barbara CA93109
 DETAILS

CITY OF SANTA BARBARA
 WATERFRONT DEPARTMENT- FACILITIES DIVISION
 WATERFRONT DIRECTOR

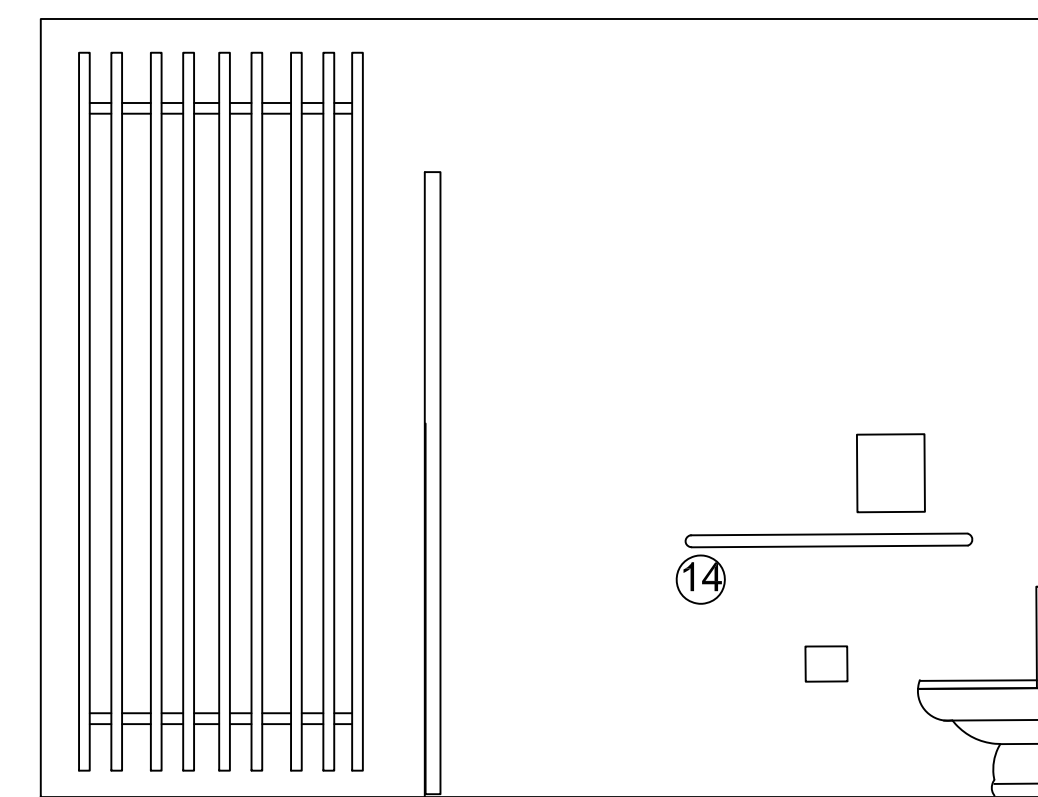
SCALE:	NOTED	PROJ.NO.	----
FACTOR:		SHT.	7 OF 9 SHTS.
VERT.	NOTED	DWG.NO.	3030-002
HOR.	NOTED		



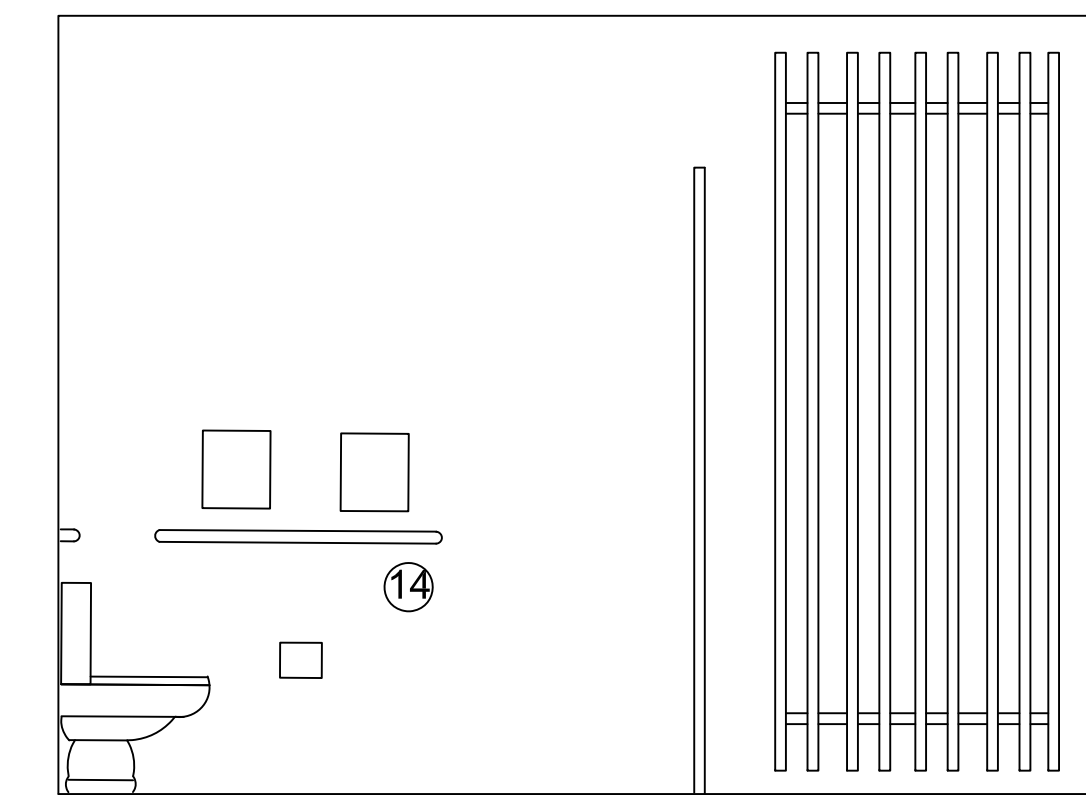
Women's Restroom



Men's Restroom



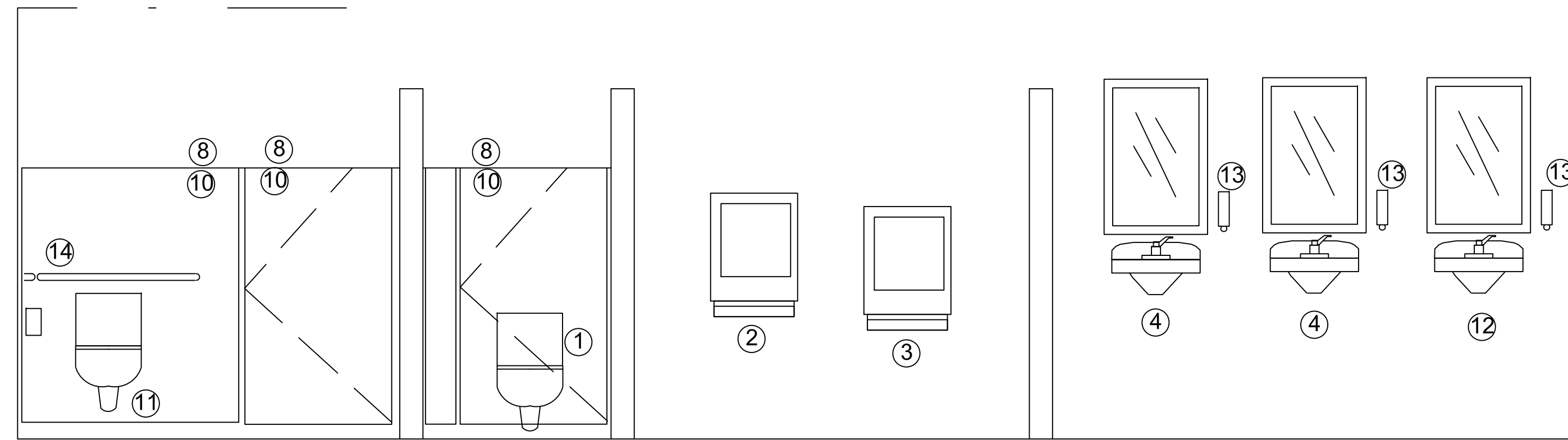
Men's Restroom



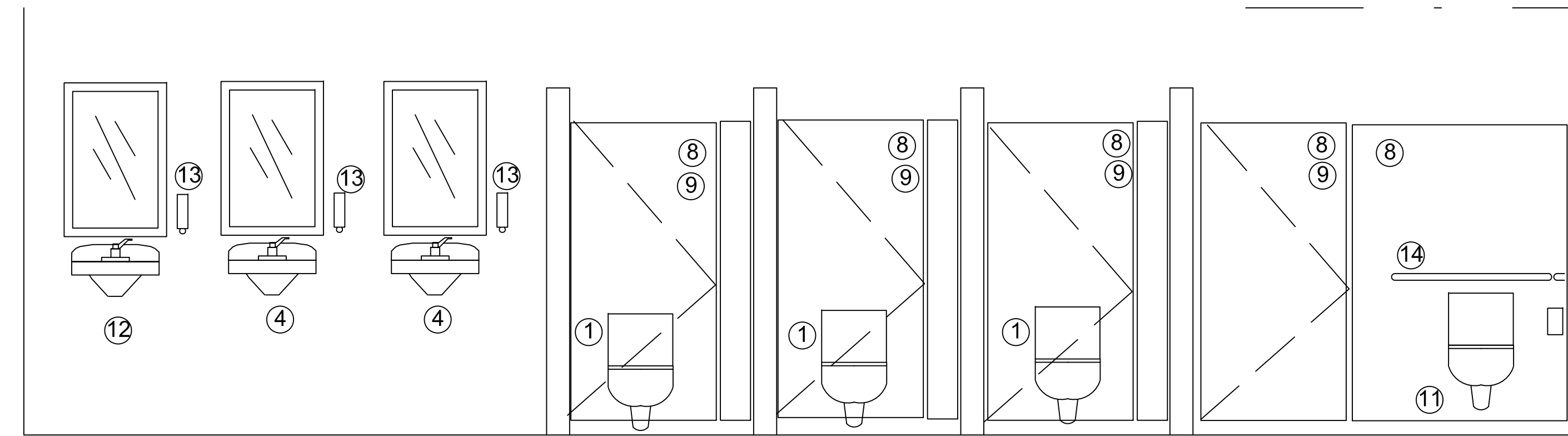
Women's Restroom

South Interior Elevation

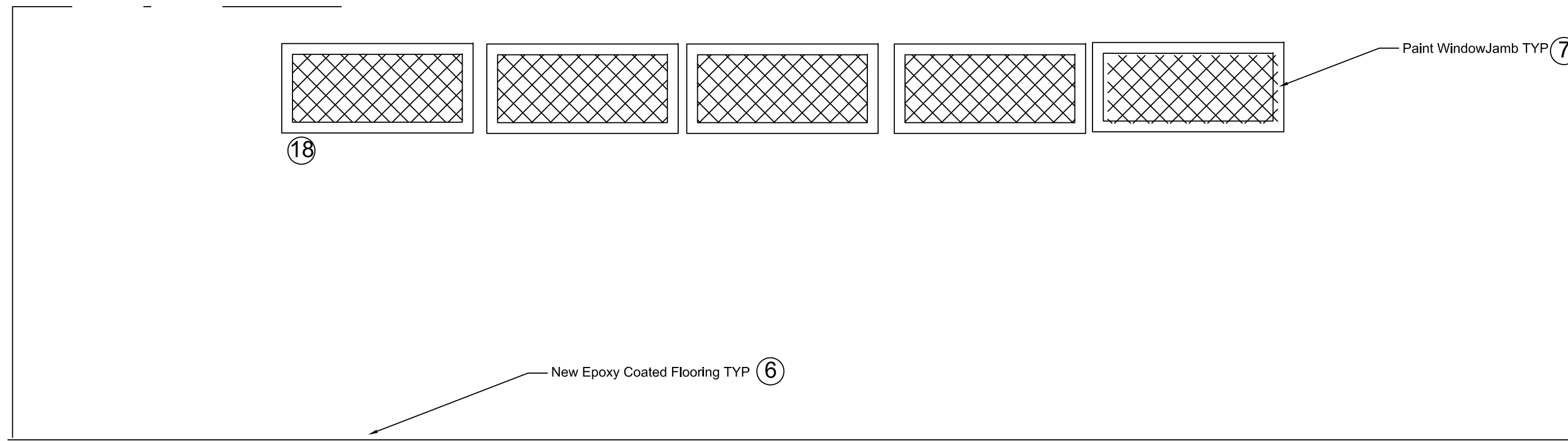
North Interior Elevation



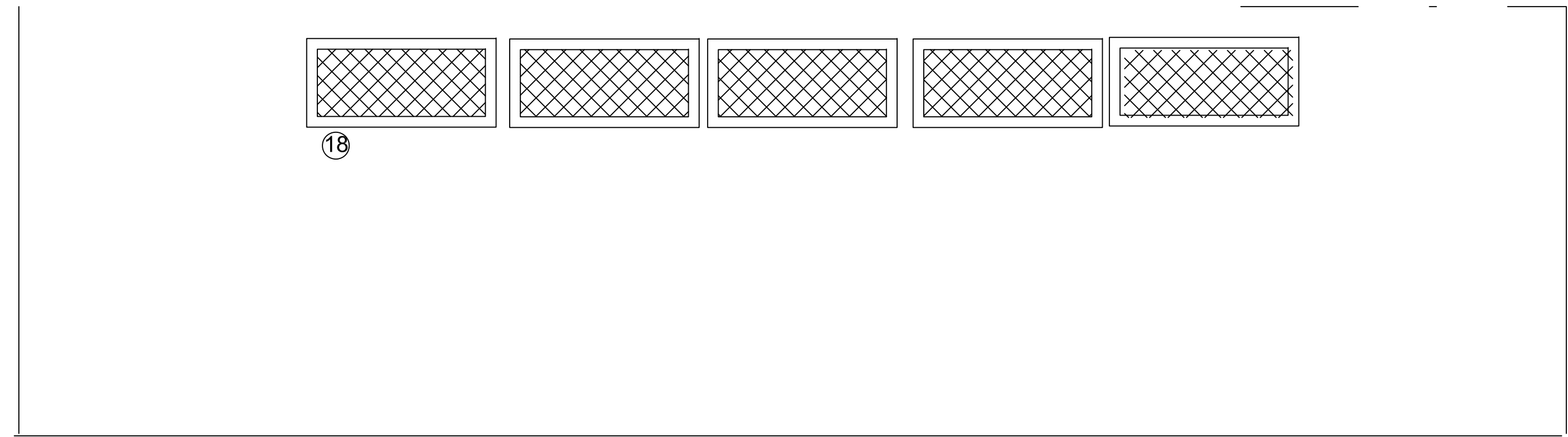
Men's Interior East Elevation



Women's Interior East Elevation



Men's Interior East Elevation



Women's Interior West Elevation

KEYED NOTES

1. Water closet, open front seat, and flush valve (typ) : 15' lip
2. Non-waterless urinal (typ) : 17" lip per ADA , w/ 30x48 clear space
3. Non-waterless urinal (typ) : 15" lip
4. Lavatory - porcelain o/ cast iron
5. Accessible hand dryer - Xcelerator Model 30x 48 clear space
6. Epoxy flooring w/ 6" cove up wall (1" radius) to be laid flush w/ exterior concrete
7. Paint- door jamb, window jamb (typ)
8. Stainless Steel partitions (brushed finish random swirl)
9. Partition door - full height women's
10. Partition door - ¾ height men's
11. Accessible water closet : 17" lip w/ 48" clear space in front see Detail Sheet for ADA stall dimensions, floor mounted
12. Accessible lavatory w/ 30x48 clear space
13. 'Gojo' soap dispenser
14. Stainless steel grab bars Detail Sheet for ADA dimensions
15. Toilet paper dispenser
16. Paint to match exterior walls
17. Repair window sill
18. (N) Wood frame and stainless steel (304) expanded metal screen.

GENERAL NOTES

- A. All materials and workmanship are subject to review by the Project Engineer.
- B. Report any and all discrepancies, ambiguities, unclear items or items that are subject to more than one interpretation, to the Project Engineer for clarification before proceeding with work.
- C. All work done shall comply with the 2022 edition of the California Building Code.
- D. Verify all dimensions prior to starting work. the Project Engineer shall be notified of any discrepancies or inconsistencies. check and coordinate all dimensions. do not scale the drawings to obtain dimensions.
- E. Neither the professional activities nor the presence of the Waterfront Project Engineer at the construction site relieves the Contractor of his obligation, duties and responsibilities for construction means, methods, sequences, techniques and procedures necessary for the Contractor to complete the work in accordance with the plans and specification in a manner to ensure the health and safety of persons who enter the construction site.
- F. Any difference between the existing construction, as observed in the field, and as shown on the drawings shall be reported to the project engineer before proceeding with work.
- G. Refer to the Project Engineer for changes as needed in the field.
- H. All work shall conform to the current edition of the Standard Specification for Public Work Construction and Ordinances of the City of Santa Barbara, 2006 edition.
- I. Contractor shall verify the design and submit changes as required to meet the criteria. changes in the design required to meet the design criteria are to be included in the bid price.

DRAFTER	DRAWN_BY	
DESIGNER	LB	
CHECKER	BA	
PROJ. MNGR.	LB	
DRAWING DATE	2/15/2022	
DESCRIPTION	DATE	APPROVED
REVISIONS		

LEADBETTER RESTROOM ADA RENOVATION PROJECT
 801 Shoreline Drive Santa Barbara CA93109
 INTERIOR ELEVATIONS

CITY OF SANTA BARBARA
 WATERFRONT DEPARTMENT- FACILITIES DIVISION

SCALE: NOTED
 FACTOR:
 VERT. NOTED
 HOR. NOTED

PROJ.NO. _____
 SHT. 8 OF 9 SHTS.
 DWG.NO. 3030-002

LANDSCAPE PLAN SHEET

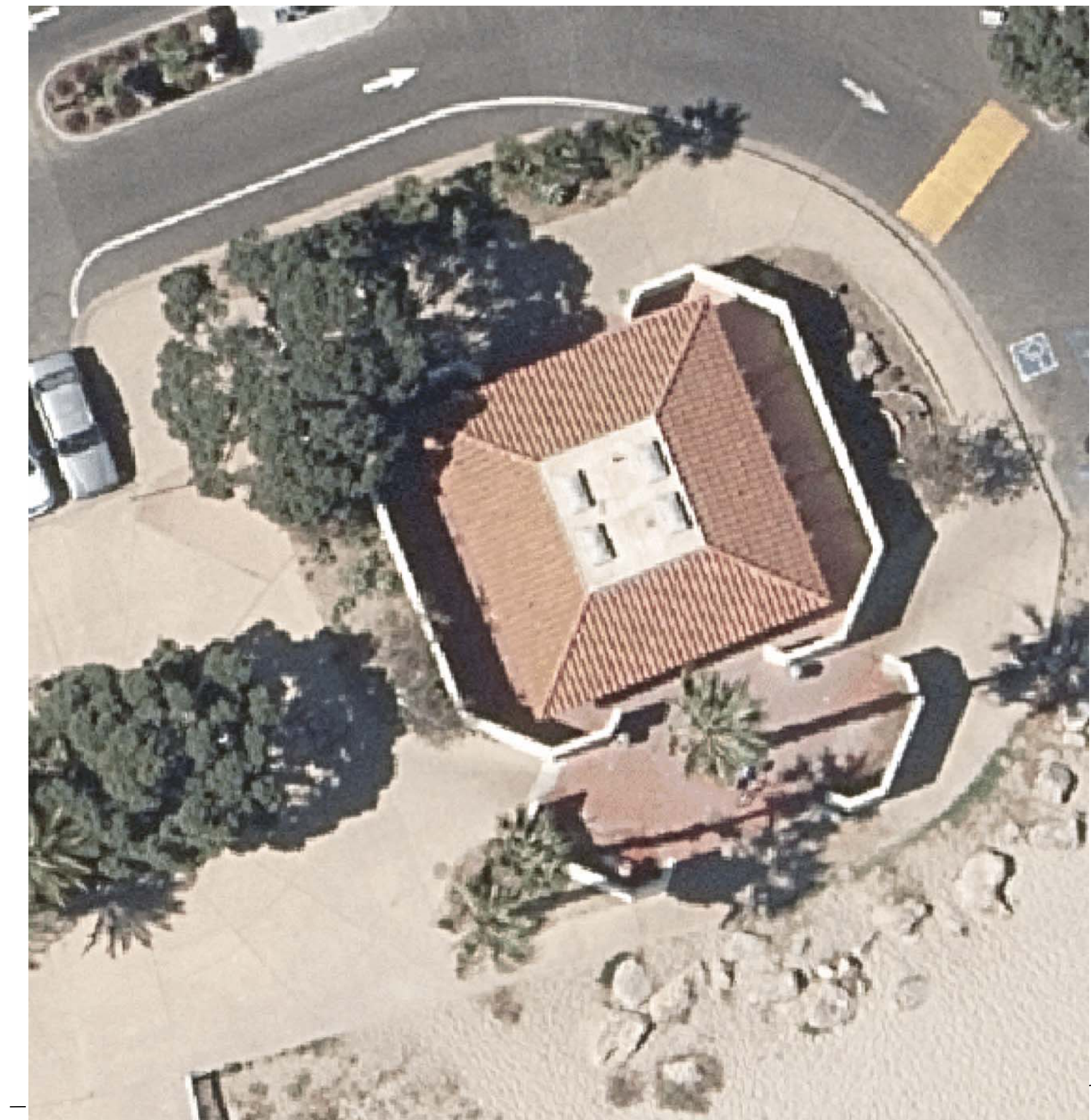
LEADBETTER RESTROOM RENOVATION

GENERAL NOTES

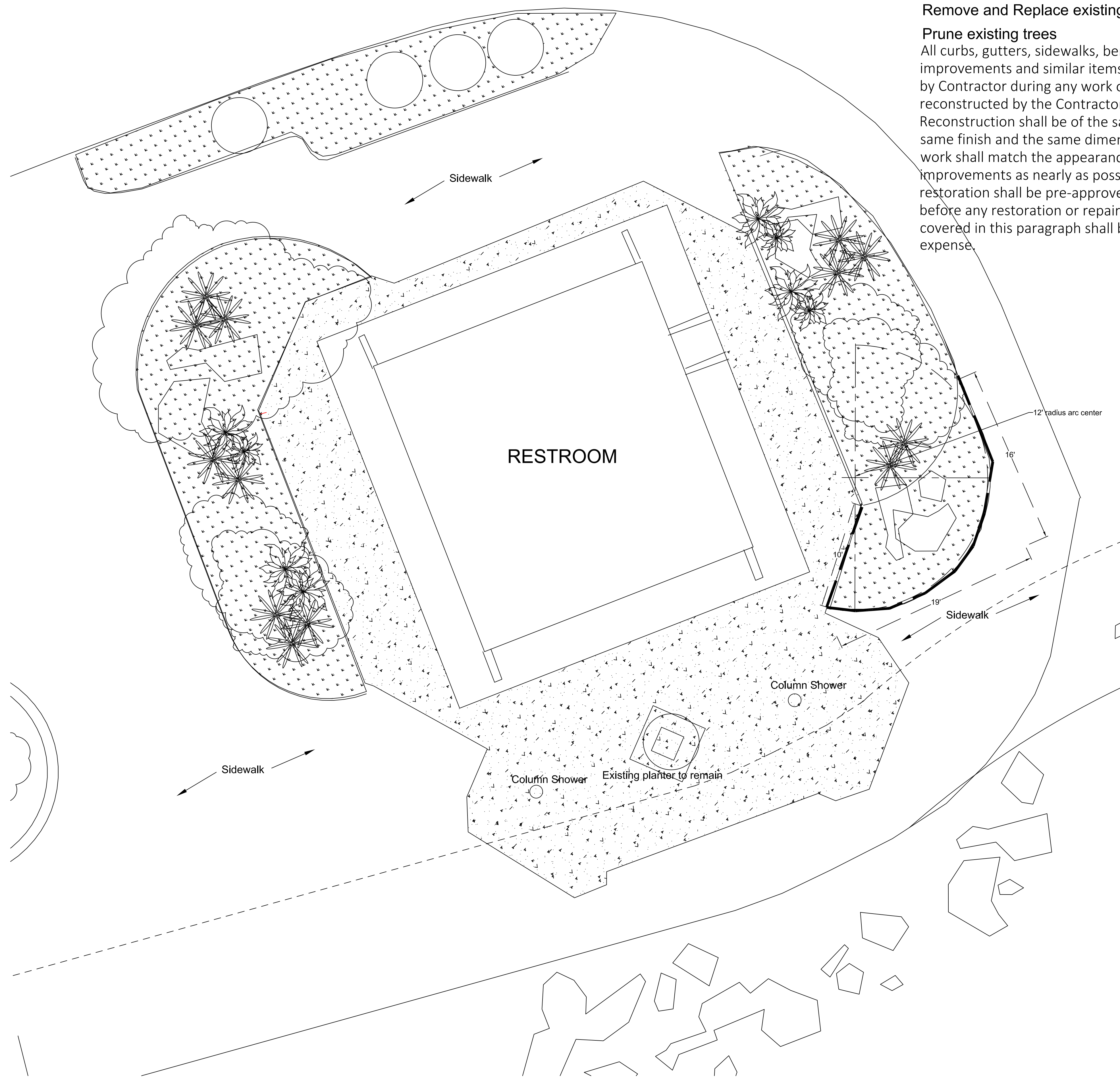
Remove and Replace existing mulch with large chip bark

Prune existing trees

All curbs, gutters, sidewalks, benches, handrails, building improvements and similar items that are broken or damaged by Contractor during any work of this contract shall be reconstructed by the Contractor at no expense to the City. Reconstruction shall be of the same kind of material with the same finish and the same dimensions as the original work. All work shall match the appearance of the existing improvements as nearly as possible. All methods of repairs or restoration shall be pre-approved by the Parks Manager before any restoration or repair is performed. All work covered in this paragraph shall be done at the contractor's expense.



EXISTING SITE



LEGEND

- Roofline, above
- [Stippled pattern] Cover unplanted soil area with 4" mulch
- [Circle] Existing Palm tree to remain
- [Irregular shape] Sandstone boulders
- Future Proposed multi use path boundary
- [Starburst shape] Existing Kalanchoe beharensis to remain
- [Cloud-like shape] Existing Melaluca Nesophila to remain
- [Starburst shape] Reposition and group Existing Blue Foxtail Agave
- [Stippled pattern] Existing Red PCC to be etched and re-stained in 'Scofield Sombrero Buff'
- [Stippled pattern] New PCC at removed footing locationsto be stained in Scofield 'Sombrero Buff'
- [Thick line] Sawcut PCC to enlarge planter area

DESCRIPTION	DATE	APPROVED

DRAFTER	LB
DESIGNER	LB
CHECKER	BA
PROJ. MNGR.	LB
DRAWING DATE	2/15/2023

LEADBETTER RESTROOM ADA RENOVATION PROJECT
 801 Shoreline Drive Santa Barbara CA93109
LANDSCAPE PLAN

CITY OF SANTA BARBARA
 WATERFRONT DEPARTMENT- FACILITIES DIVISION

 WATERFRONT DIRECTOR

SCALE: 1:5
 FACTOR: _____
 VERT. _____
 HOR. _____

PROJ.NO. _____
 SHT. 9 OF 9 SHTS.
 DWG.NO. 3030-002